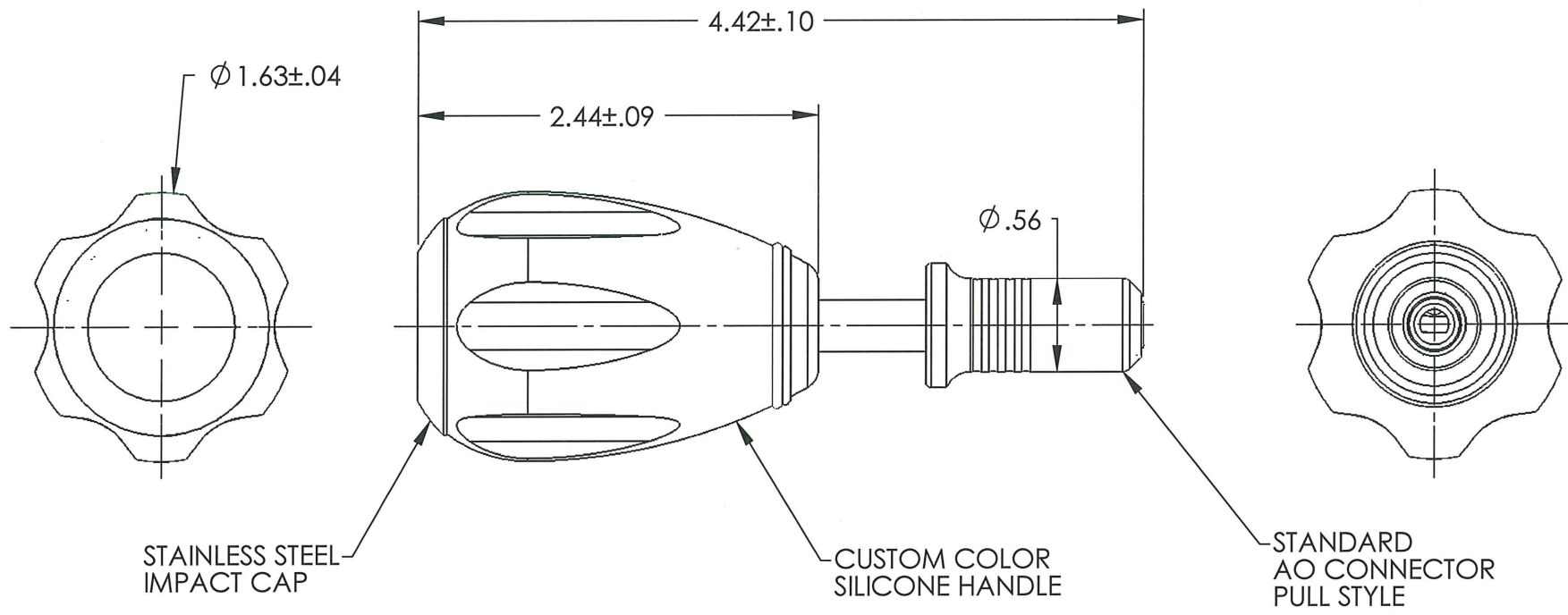


# ILLUSTRATION DRAWING REFERENCE ONLY

REVISIONS			
REV.	DESCRIPTION	DATE	APPROVED
A	ECN 7027	2/13/07	MCS



**CUSTOMER APPROVAL**

APPROVED BY: \_\_\_\_\_

DATE: \_\_\_\_\_

THE INFORMATION CONTAINED IN THIS DRAWING IS THE SOLE PROPERTY OF GAUTHIER BIOMEDICAL, INC., ANY REPRODUCTION IN PART OR WHOLE WITHOUT THE WRITTEN PERMISSION OF GAUTHIER BIOMEDICAL, INC. IS PROHIBITED.

**INSPECTION SYMBOLS**

	CRITICAL
	AQL

UNLESS OTHERWISE SPECIFIED  
DIMENSIONS ARE IN INCHES  
TOLERANCES ARE:  
FRACTIONS DECIMALS ANGLES  
±1/32 .X ±.020 ±1°  
.XX ±.010  
.XXX ±.005  
.XXXX ±.0005



GAUTHIER BIOMEDICAL, INC.  
1235 NORTH DAKOTA DRIVE, SUITE G  
GRAFTON, WI 53024  
(262) 546-0010 ph. (262) 546-0011 fax  
E-mail: engineering@gauthierbiomedical.com

MATERIAL	SEE DETAILS	APPROVALS	DATE	DESCRIPTION PALM STYLE TORQUE WITH SMALL A-O ADAPTER
DRAWN	SSL	1/6/06		
CHECKED	<i>gaw</i>	10/15/09		
APPROVED	<i>gaw</i>	10/15/09		
FINISH		DO NOT SCALE DRAWING		
PASSIVATE	ANODIZE	SIZE	PART NUMBER	REV.
		A	G172215__(cc)	A
		SCALE	CAD FILE	SHEET
		1:1	G172215__(cc)	1 OF 1