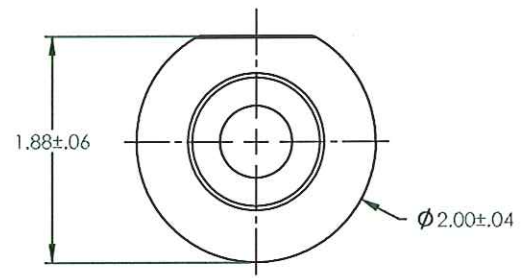
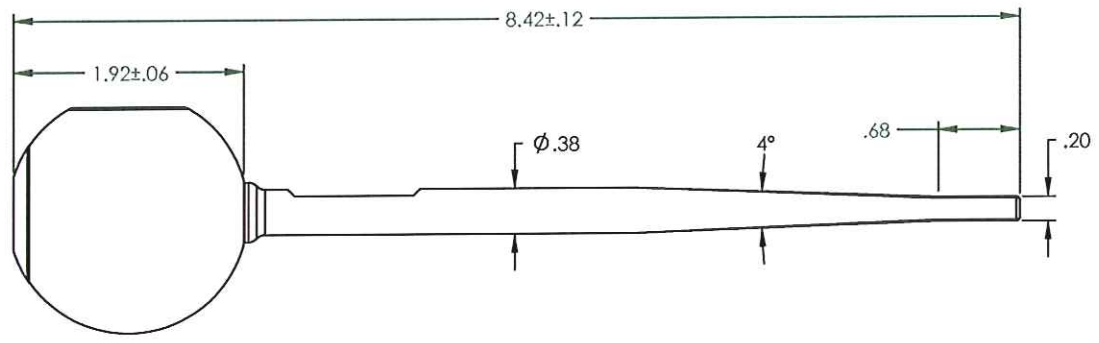
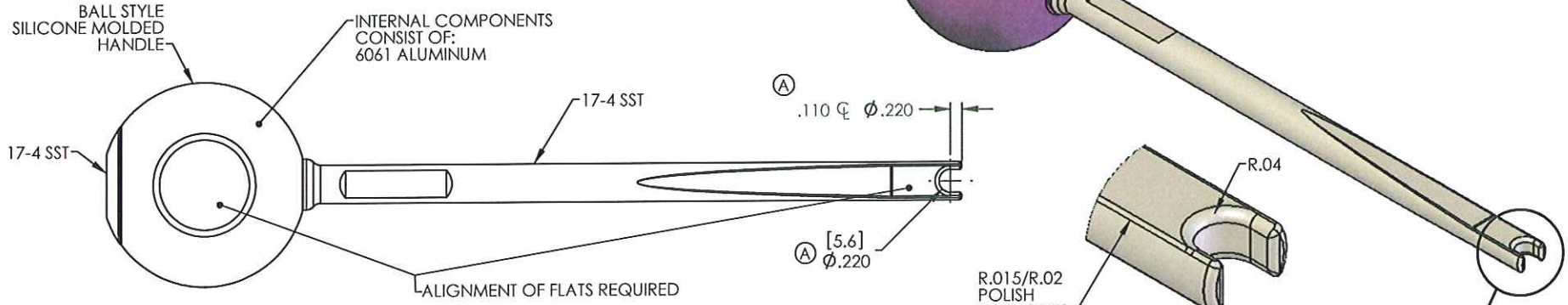


REVISIONS			
REV.	DESCRIPTION	DATE	APPROVED
A	.110 CL Ø.220 WAS .07 CL Ø.23,	4/20/09	RJB
B	ECN 11039	2/23/11	JAW

# ILLUSTRATION DRAWING -- REFERENCE ONLY



DETAIL B  
SCALE 3 : 1

**CUSTOMER APPROVAL**  
 APPROVED BY: \_\_\_\_\_  
 DATE: \_\_\_\_\_

**INSPECTION SYMBOLS**  
 ○ CRITICAL  
 ○ AQL

UNLESS OTHERWISE SPECIFIED  
 DIMENSIONS ARE IN INCHES  
 TOLERANCES ARE:  
 FRACTIONS DECIMALS ANGLES  
 +1/32 .0010 .010°  
 .XX ±.010  
 .XXX ±.005  
 .XXXX ±.0005



GAUTHIER BIOMEDICAL, INC.  
 1235 North Dakota Drive, Suite G  
 Grafton, WI 53024  
 (262) 546-0010 ph. (262) 546-0011 fax  
 E-mail: engineering@gauthierbiomedical.com

MATERIAL	SEE DETAILS	APPROVALS	DATE	DESCRIPTION
HEAT TREAT		DRAWN	RJB 9/30/08	ROD PUSHER, 5.5mm
FINISH		CHECKED	RJB 3/4/11	LARGE BALL-STYLE HANDLE
PASSIVATE		APPROVED	RJB 3/4/11	
ANODIZE		DO NOT SCALE DRAWING		
		SIZE	FARTHNUMBER	REV.
		B	G185300 (cc)	B
		SCALE 1:1	CAD FILE G185300 (cc)	SHEET 1 OF 1

THE INFORMATION CONTAINED IN THIS DRAWING IS THE SOLE PROPERTY OF GAUTHIER BIOMEDICAL, INC. ANY REPRODUCTION IN PART OR WHOLE WITHOUT THE WRITTEN PERMISSION OF GAUTHIER BIOMEDICAL, INC IS PROHIBITED.