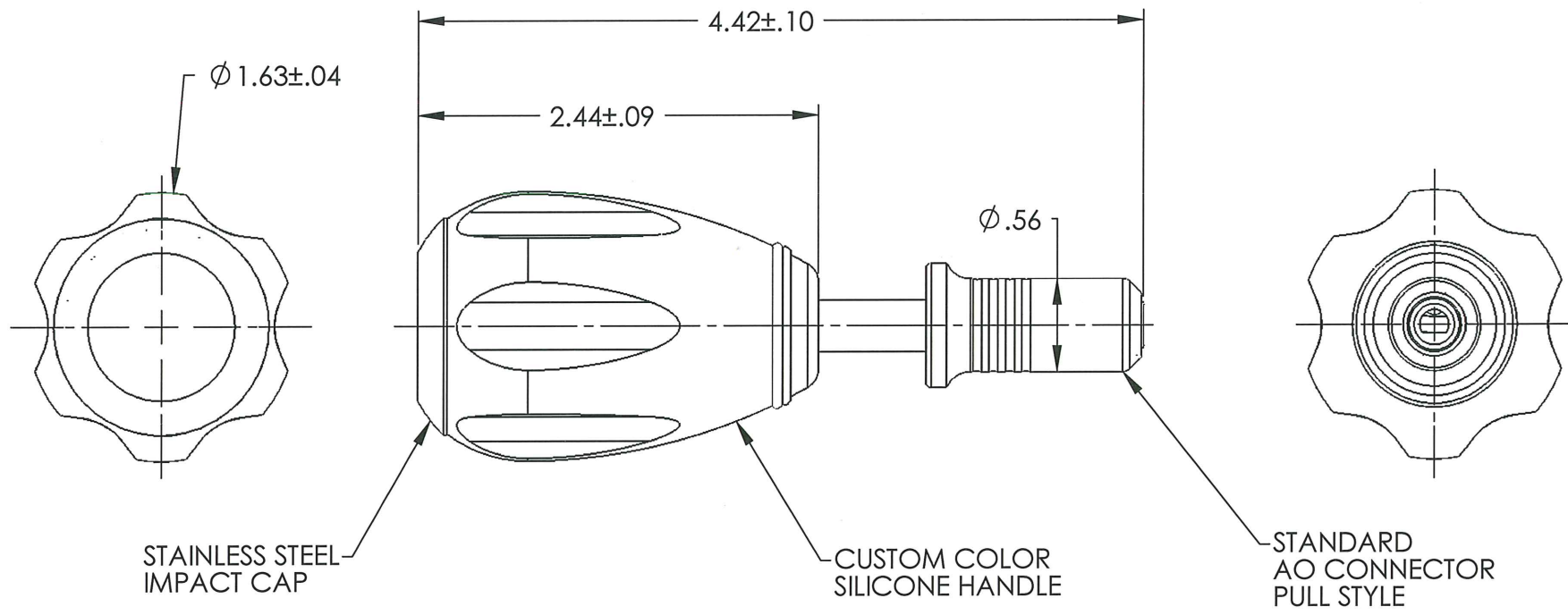


ILLUSTRATION DRAWING REFERENCE ONLY

REVISIONS			
REV.	DESCRIPTION	DATE	APPROVED
A	ECN 7027	2/13/07	MCS



CUSTOMER APPROVAL

APPROVED BY: _____

DATE: _____

THE INFORMATION CONTAINED IN THIS DRAWING IS THE SOLE PROPERTY OF GAUTHIER BIOMEDICAL, INC., ANY REPRODUCTION IN PART OR WHOLE WITHOUT THE WRITTEN PERMISSION OF GAUTHIER BIOMEDICAL, INC. IS PROHIBITED.

INSPECTION SYMBOLS

	CRITICAL
	AQL

UNLESS OTHERWISE SPECIFIED DIMENSIONS ARE IN INCHES TOLERANCES ARE:

FRACTIONS	DECIMALS	ANGLES
±1/32	.X ±.020	±1°
	.XX ±.010	
	.XXX ±.005	
	.XXXX ±.0005	

MATERIAL	SEE DETAILS
HEAT TREAT	
FINISH	
PASSIVATE	

gb
Gauthier Biomedical Inc.

APPROVALS	DATE
DRAWN SSL	1/6/06
CHECKED gaw	10/15/09
APPROVED gaw	10/15/09
DO NOT SCALE DRAWING	
PASSIVATE	ANODIZE

GAUTHIER BIOMEDICAL, INC.
1235 NORTH DAKOTA DRIVE, SUITE G
GRAFTON, WI 53024
(262) 546-0010 ph. (262) 546-0011 fax
E-mail: engineering@gauthierbiomedical.com

DESCRIPTION	
PALM STYLE TORQUE WITH SMALL A-O ADAPTER	
SIZE A	PART NUMBER G172215__(cc)
SCALE 1:1	CAD FILE: G172215_(cc) SHEET 1 OF 1